

Contact us!

- Email: contact@nuxeo.com
- Web: www.nuxeo.com
- Address: 11-15 Betterton Street, London, WC2H 9BP
- Tel.: +44 (0) 207 043 7933

They already use our solutions

- **IRSN** (Radioprotection and Nuclear Safety Institute): ECM platforms (document management, record management, legal audit and collaboration).
- **The Press Association**: new multimedia system for teletext.
- **AFP** (third largest press agency in the world): next-generation multi-media content management infrastructure based on Nuxeo's RCP Platform (document management, collaboration, publishing)
- **Military Intelligence – French Ministry of Defense** (in partnership with **Eurocis**): Digital asset management system enabling the storage and management of digital photos for the French Military Intelligence.

Nuxeo Service Platform (SP)

The first service oriented enterprise content management platform!

Nuxeo Service Platform is a complete, robust and extensible Java-based Enterprise Content Management (ECM) platform, developed under an open source license by Nuxeo and a wide development community.

Nuxeo Service Platform is designed to enable the building and running of a large range of applications within the ECM scope, closely matching enterprises' needs from the server to the desktop. Nuxeo SP is a global solution ready to take on the challenges of this new era of information management.

Nuxeo Service Platform is the common base for:

- **Nuxeo Enterprise Platform (EP)**: a server-side platform (accessible from the web or from rich clients) to create large ECM applications (e.g., document management, global collaboration platform, etc.),
- **Nuxeo Rich Client Platform (RCP)**: a framework, based on Eclipse RCP, Microsoft® Office™ and OpenOffice.org, to create rich client (desktop) applications related to document management or collaboration.

An extensible platform

One of the key goals of the project is to create an extensible and easy to integrate platform. Nuxeo's architecture is especially designed to fit this goal.

Applications are developed on top of the Nuxeo platform by using components composition and extension: all Nuxeo components provide services that can be configured without writing any code, and can contribute these services to other components using «extension points». This technique encourages the creation of truly re-usable components and enables to quickly create complex applications by assembling and configuring existing components.

Building vertical applications on top of Nuxeo SP is dramatically easy. You just have to choose the services you want to use, configure them and create the vertical extensions you need.

A scalable application

Scalability is one of the key advantages of Nuxeo SP. With a dedicated set of tools, Nuxeo SP is able to support huge volumes of data and users and to fit the scalability needs of highly available critical applications.

Nuxeo SP offers the concept of "storage core", so that it is possible to split the physical storage of documents for better performance and define several storage back-ends in the same ECM application.

Nuxeo SP provides a services architecture. Each service of the platform can be deployed on a dedicated machine to enhance the system performance (for example : one machine for the storage core, one for the indexing service, one for the file transformation, two for the application services and two for the web front-end).

Last but not least, almost every services available in Nuxeo support application clustering using the Java EE native clustering mechanisms and provide transparent distributed cache.

Covered ECM scope:

- Document Management,
- Collaborative work,
- Records Management & Digital Asset Intelligence,
- Business Process Management,
- Retention Management,
- Compliance Management,
- Archiving.



The ideal SOA platform

Businesses need an ECM platform that can be remotely accessed by other applications or services. Nuxeo SP offers a service oriented architecture so that each service of Nuxeo SP provides a remote access interface (RMI and EJB). You can easily get to the access point of Nuxeo SP from an external application, and interact with all its services wherever they are physically located. Each service of Nuxeo SP can be seen as an information system service that can be used by other applications. Thereby, Nuxeo SP offers a global ECM repository for the enterprise information system.

Besides each service API, Nuxeo SP offers high level Web Services (SOAP, REST and WebDAV) interfaces to guarantee an easy integration with non-java technologies.

Nuxeo SP is the perfect choice to be integrated into a high level service architecture.

Nuxeo Enterprise Platform (EP)

Nuxeo EP is a robust, extensible, global Enterprise Content Management (ECM) server-side solution available as Open Source Software. Deployed on a Java EE 5 application server, it leverages the full potential of the Java EE 5 platform, including: clustering, high-availability, manageability, integration within your information system, development tools support. Nuxeo EP is a global solution ready to take on challenges of this new era of information management (Web 2.0, increasing quantity of digital information, lots of emails, offline work, mobility, etc.).

Nuxeo EP is designed to be used from a web browser such as MS-IE or Firefox, with a rich, Ajax-based, interface, from an office suite such as MS-Office, or from a Nuxeo RCP application.

The Nuxeo EP default configuration provides both collaborative work and publication through a functional separation between workspaces and sections:

- **Workspaces:** provide to end users a toolset to achieve document management and collaboration (document sharing, versioning, relations, access rights, etc.). Workspaces offer an innovative approach to leverage teamwork and to manage documents in a collaborative way (from the creation to the archiving phase).
- **Sections:** provide hierarchical views to access the validated content produced in workspaces and can be used as a website hierarchy or as a file plan.

Nuxeo Rich Client Platform (RCP)

Nuxeo Rich Client Platform (RCP) offers a new ECM experience by providing a rich and reactive interface to access all the services of Nuxeo SP. Nuxeo RCP is a very extensible OSGi based platform designed to enable building user oriented ECM applications.

Dedicated features

Nuxeo RCP provides specific features such as:

- **XHTML Editor.**
- **Photo Editor:** multi-view support (high def., full size, medium size, thumbnail), rotate/crop/resize, pre-defined sizes, size profiles (for different desks), etc.
- **Picture management:** picture processing engine that can perform operation on pictures and offers a photo grid (like in Apple Aperture, Google Picasa, etc.) that can be used to browse picture batches in a convenient way.

Portlets (Eclipse Views)

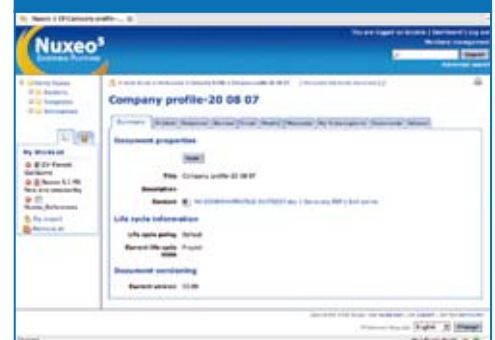
Nuxeo RCP includes a common set of portlets that can be customized and used on projects:

- **Document Explorer:** tree view of the repository to browse the content.
- **Document Editor:** can be used and configured to edit custom content. Each editor can declare new tabs to provide new features when opening a document (history view, previous versions, etc.).
- **Search Result:** displays the results of a search.
- **Quickview:** displays some information about the current selected document.
- **Photo Grid:** displays a grid of photos with dynamic resizing of picture size.
- **Worklist:** users put documents into this portlet to perform bulk actions on them (e.g. paste, publish, etc.).

Nuxeo Service Platform Technologies

- Application server : Java EE
- Extension language : Java
- Optional scripting support: JavaScript, Python, Ruby, Groovy
- Native clustering and distributed cache solution (SOA/Service Oriented Architecture)
- Interface Framework: JBoss Seam/JSF
- Databases : SQL DBMS (Oracle, PostgreSQL, MySQL, etc.)
- Content Repository: Java Content Repository compliant to JSR-170
- Multi-sites / multi-instances support
- Virtual directories support (LDAP, SQL)
- Web Services support (SOAP, REST, WebDAV)
- Content Model: W3C XMLSchemas
- Interface: Web and Rich Client

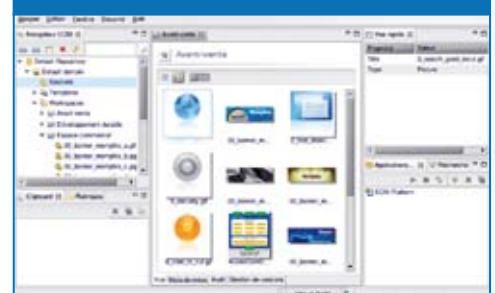
Nuxeo EP Screenshot



Why Open Source ?

- Innovative concepts
- Royalty-free software
- Transparent development
- Active community

Nuxeo RCP Screenshot



Want to learn more? Do not hesitate, contact us!

- Tel.: +44 (0) 207 043 7933
- Email: contact@nuxeo.com
- Find out more on www.nuxeo.com